

# egTracker 1.1.95

---

Licence.....	2
Licence grant .....	2
Permissions.....	2
Disclaimer of Warranty .....	2
Limitation of Liability.....	3
About egTracker .....	3
Requirements .....	3
How to configure .....	3
Windows Server 2008 .....	3
Site folder .....	3
Grant write permission.....	3
Microsoft SQL Server 2008 R2 Express.....	4
Restore database.....	4
Create new database user.....	4
User Mapping .....	5
IIS 7 .....	6
Add web site .....	6
Configure application pool .....	7
Configuration file .....	8

Connection String .....	8
Website URL .....	8
Edit Ticket URL.....	8
On Login Redirect to HTTPS.....	9
Email From.....	9
SMTP.....	9
Verify website.....	9
Change your admin password .....	10
Create new project.....	11
Grant permissions .....	11
Create new ticket .....	12

## Licence

Copyright (c) 2008-2012 grise.pl

### Licence grant

We hereby grants you a nonexclusive and non-transferable licence to use the egTracker software. The licence key delivered to you (standard edition) cannot be disclosed to any other person. The use of your licence key by anyone other than you will be deemed a wilful violation of this licence.

### Permissions

Free edition is available for commercial use with up to 10 users. If your business needs more than 10 users, you are obligated to buy standard edition.

### Disclaimer of Warranty

There is no warranty for the program. The program is provided "as is" without warranty on any kind, either expressed or implied. The entire risk as to the quality and performance of the program is with you. Should the program prove defective, you assume that cost of all necessary servicing, repair or correction.

## Limitation of Liability

In no event will any copyright holder, or any other party, be liable to you for damages, including any general, special, incidental or consequential damages arising out of the use or inability to use the program (including but not limited to loss of data or data being rendered inaccurate or losses sustained by you or third parties or a failure of the program to operate with and other programs), even if such holder or other party has been advised of the possibility of such damages.

## About egTracker

egTracker is a simple, fast, high quality, web-based issue tracker. Application uses cutting-edge technologies to process and manage business issues. egTracker provides knowledge base to improve efficiency and productivity in organizations.

## Requirements

Requirements:

- Windows Server 2003 (or higher)
- .NET framework 4.0
- ASP.NET MVC 2
- IIS (Internet Information Services)
- Microsoft SQL Server 2008 R2 Express (or higher)
- SMTP server

## How to configure

### Windows Server 2008

#### Site folder

Copy the site (egTracker\_1\_1\_95\site) to selected site folder on your server (for example: c:\inetpub\egTracker\_1\_1\_95).

#### Grant write permission

Grant write permission to folder 'App\_Data':

- c:\inetpub\egTracker\_1\_1\_95\AppData
- Properties
- Security
- Edit

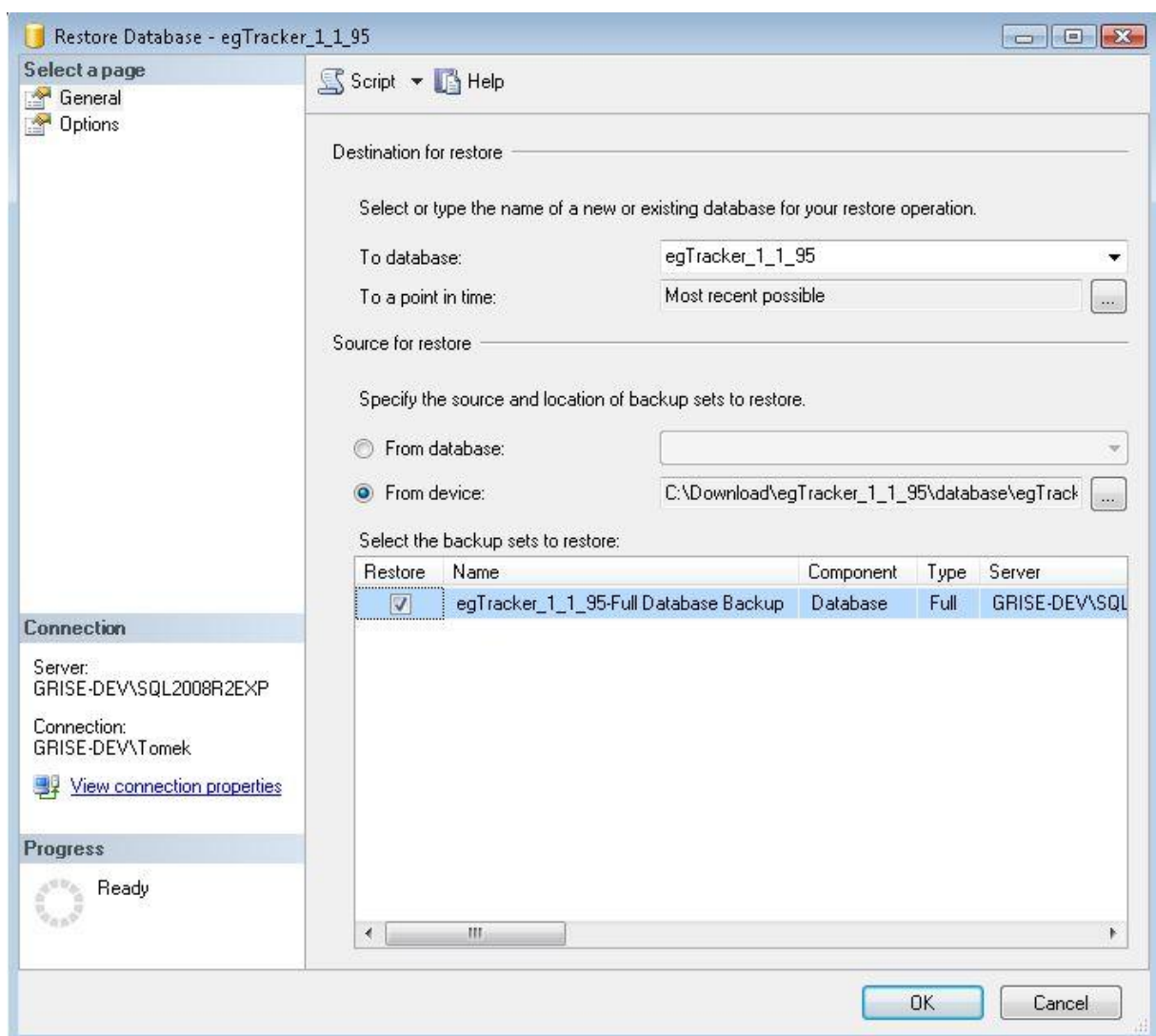
- Add
- Network Service
- Full control - Allow

## Microsoft SQL Server 2008 R2 Express

### Restore database

Databases – Restore database:

- From device: egTracker\_1\_1\_95\database\egTracker\_1\_1\_95.bak
- To database: egTracker\_1\_1\_95



### Create new database user

Security – Logins – New Login:

- Login name: egTracker\_1\_1\_95

- SQL Server authentication: true
- Password: egTracker\_1\_1\_95 (use strong password)
- Enforce password policy: false
- Enforce password expiration: false
- User must change password at next login: false
- Default database: egTracker\_1\_1\_95

Login - New

Select a page

- General
- Server Roles
- User Mapping
- Securables
- Status

Script Help

Login name: egTracker\_1\_1\_95 Search...

☐ Windows authentication  
☒ SQL Server authentication

Password: .....

Confirm password: .....

☐ Specify old password  
 Old password:

☐ Enforce password policy  
☐ Enforce password expiration  
☐ User must change password at next login

☐ Mapped to certificate  
☐ Mapped to asymmetric key  
☐ Map to Credential

Mapped Credentials

Credential	Provider
------------	----------

Add Remove

Default database: egTracker\_1\_1\_95

Default language: <default>

OK Cancel

Connection

Server: GRISE-DEV\SQL2008R2EXP

Connection: GRISE-DEV\Tomek

[View connection properties](#)

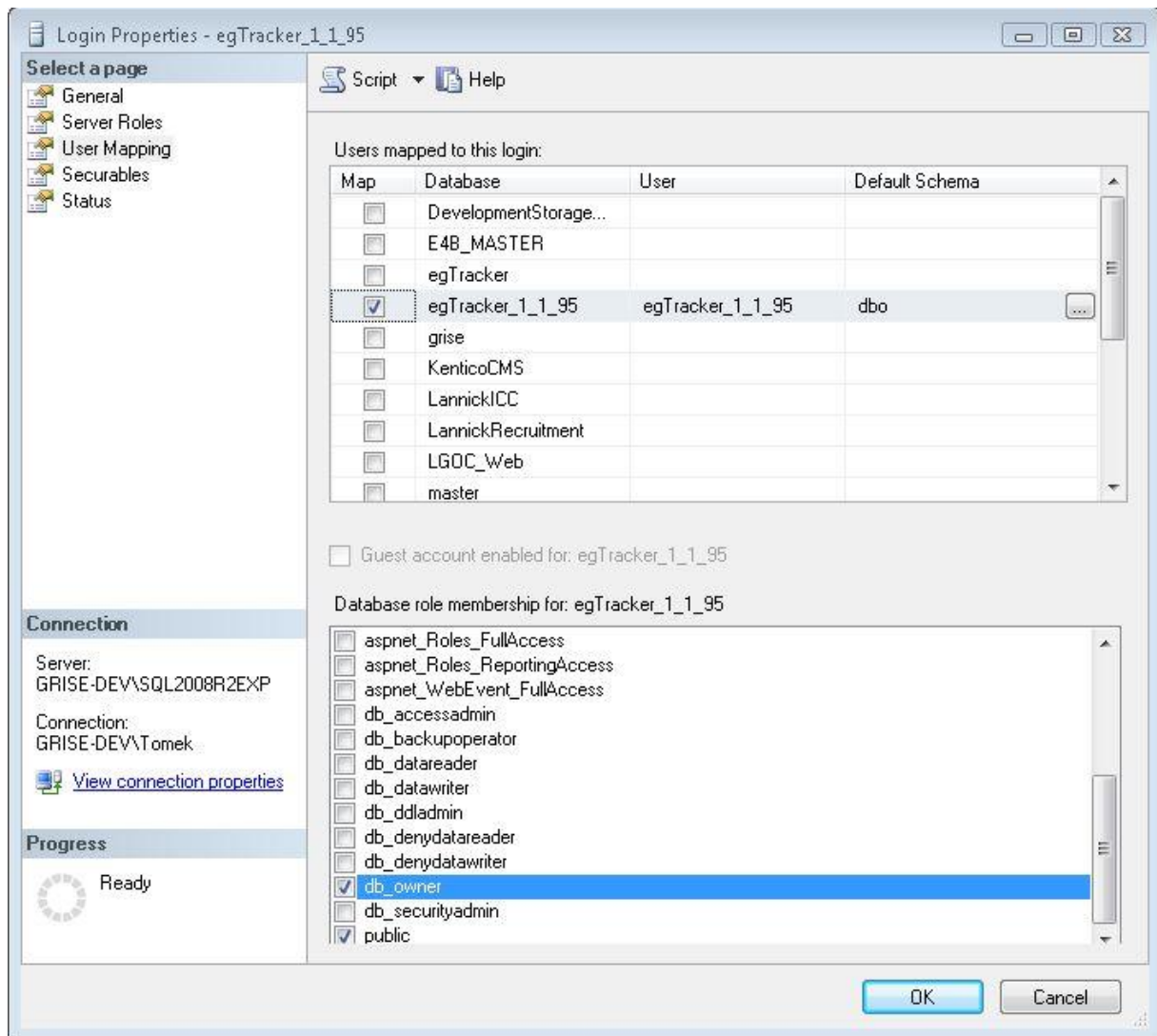
Progress

Ready

## User Mapping

Security – Logins - egTracker\_1\_1\_95 – Properties:

- User Mapping
- Map Database: egTracker\_1\_1\_95
- Map User: egTracker\_1\_1\_95
- Default Schema: dbo
- Database role membership: db\_owner

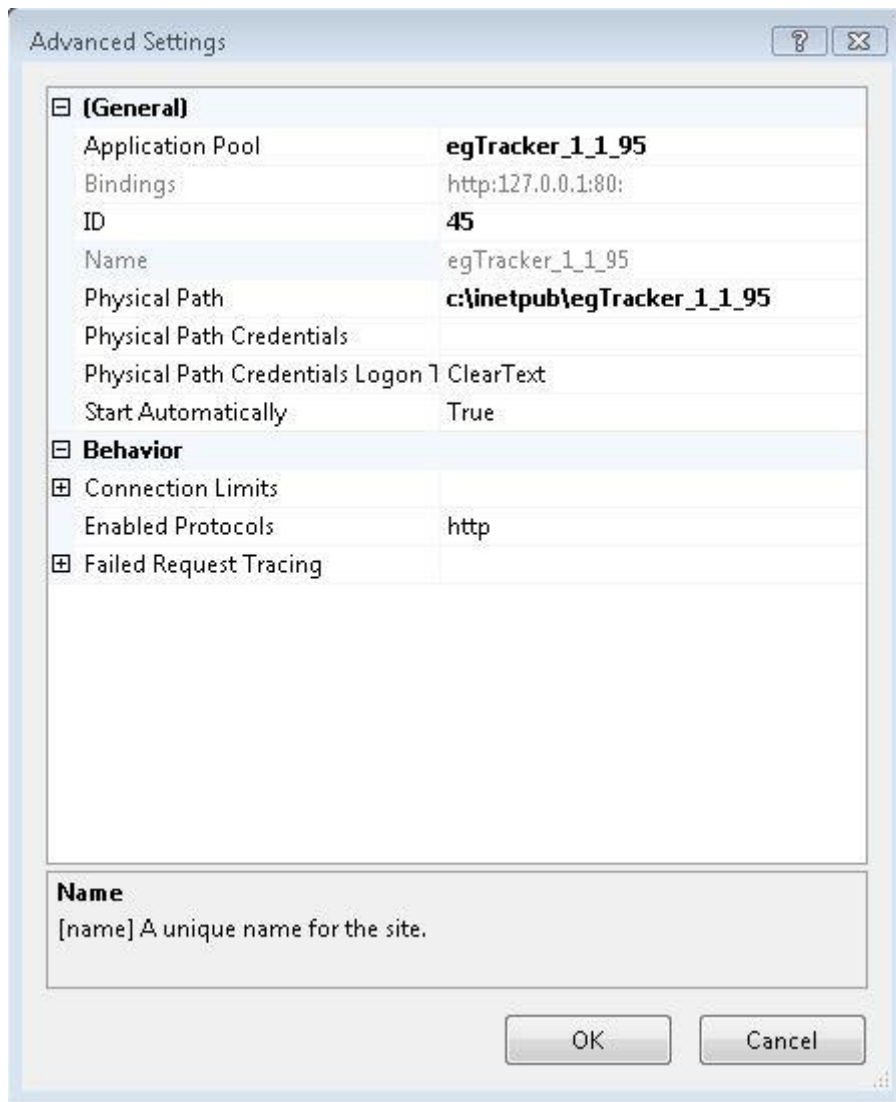


## IIS 7

### Add web site

Add new website to your IIS:

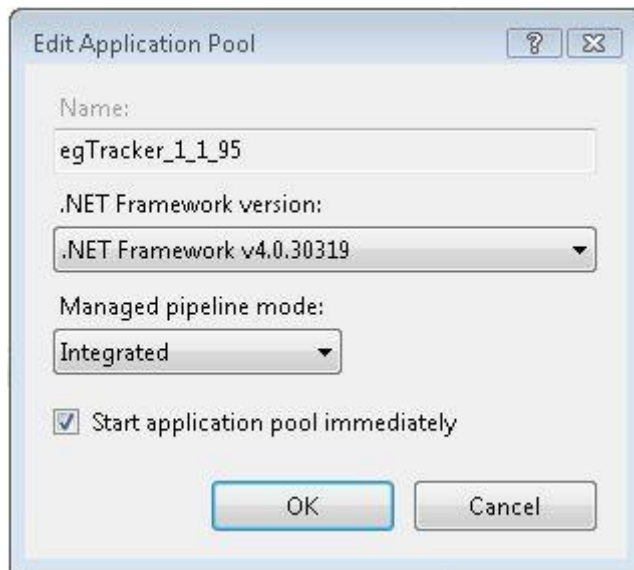
- Site name: egTracker\_1\_1\_95
- Application pool: egTracker\_1\_1\_95
- Physical path: c:\inetpub\egTracker\_1\_1\_95
- IP address: 127.0.0.1
- Port: 80



## Configure application pool

Application pools - egTracker\_1\_1\_95 – Basic settings:

- .NET Framework version: .NET Framework v4.0
- Managed pipeline mode: Integrated



## Configuration file

Configure website configuration file (c:\inetpub\egTracker\_1\_1\_95\Web.config).

## Connection String

<connectionStrings>

<add name="ApplicationServices" connectionString="Data Source=localhost\SQL2008R2EXP;Initial Catalog= egTracker\_1\_1\_95;User ID= egTracker\_1\_1\_95;Password= egTracker\_1\_1\_95" providerName="System.Data.SqlClient"/>

<add name="egTrackerData.Properties.Settings.ApplicationServices" connectionString="Data Source=localhost\SQL2008R2EXP;Initial Catalog= egTracker\_1\_1\_95;User ID= egTracker\_1\_1\_95;Password= egTracker\_1\_1\_95" providerName="System.Data.SqlClient"/>

</connectionStrings>

## Website URL

Use your domain name.

<add key="WebsiteUrl" value="http://127.0.0.1/" />

## Edit Ticket URL

User your domain name.

<add key="EditTicketUrl" value="http://127.0.0.1/Tickets/Edit/" />



## On Login Redirect to HTTPS

If your site has configured HTTPS then set it to 1.

```
<add key="OnLoginRedirectToHttps" value="0"/>
```

## Email From

Use your email from address.

```
<add key="EmailFrom" value="dontreply@demo.egtracker.com"/>
```

## SMTP

Use your SMTP server.

```
<mailSettings>
```

```
    <smtp from="dontreply@demo.egtracker.com">
```

```
        <network host="localhost" port="25" userName="dontreply@demo.egtracker.com"
password="smtp_password" defaultCredentials="false"/>
```

```
    </smtp>
```

```
</mailSettings>
```

## Verify website

Open your favourite browser:

- <http://127.0.0.1>
- Log On
- User Name: admin
- Password: adminadmin

egTracker

English | Polski | Log On

Home

Home > Log On

## Log On

Please enter your email/username and password.

Email / User Name:  
admin

Password:  
••••••••

☐ Remember me?

Log On

Home > Log On

Powered by egTracker.com ©2012 grise.pl | Home | About

## Change your admin password

Change your admin password:

- Settings
- Change your password

egTracker

English | Polski | Welcome admin! Log Off

Tickets | Search | Settings | Companies | Projects | Users | Admin

Home > Settings > Change your password

## Change your password

Old password:

New password:

Confirm new password:

Save

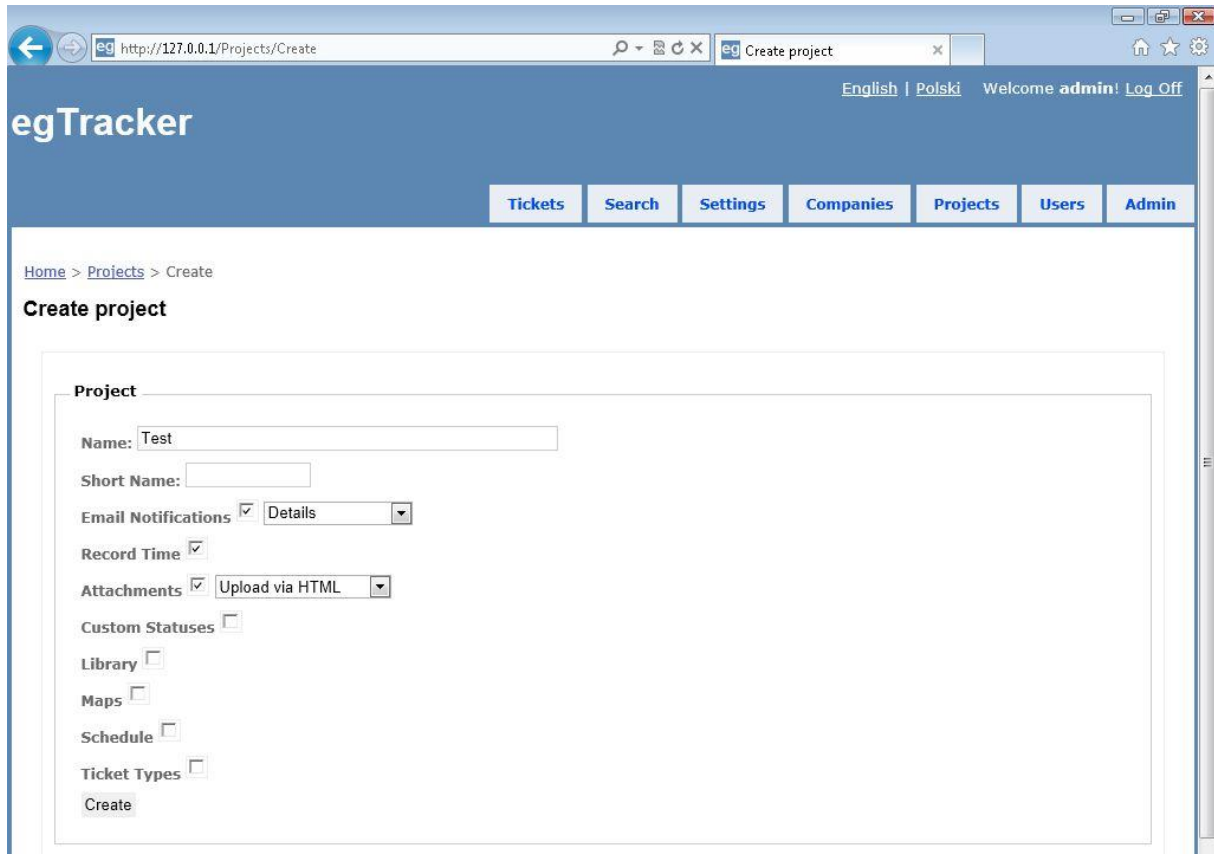
Home > Settings > Change your password

Powered by egTracker.com ©2012 grise.pl | Home | About

## Create new project

Create new project:

- Projects
- Create project



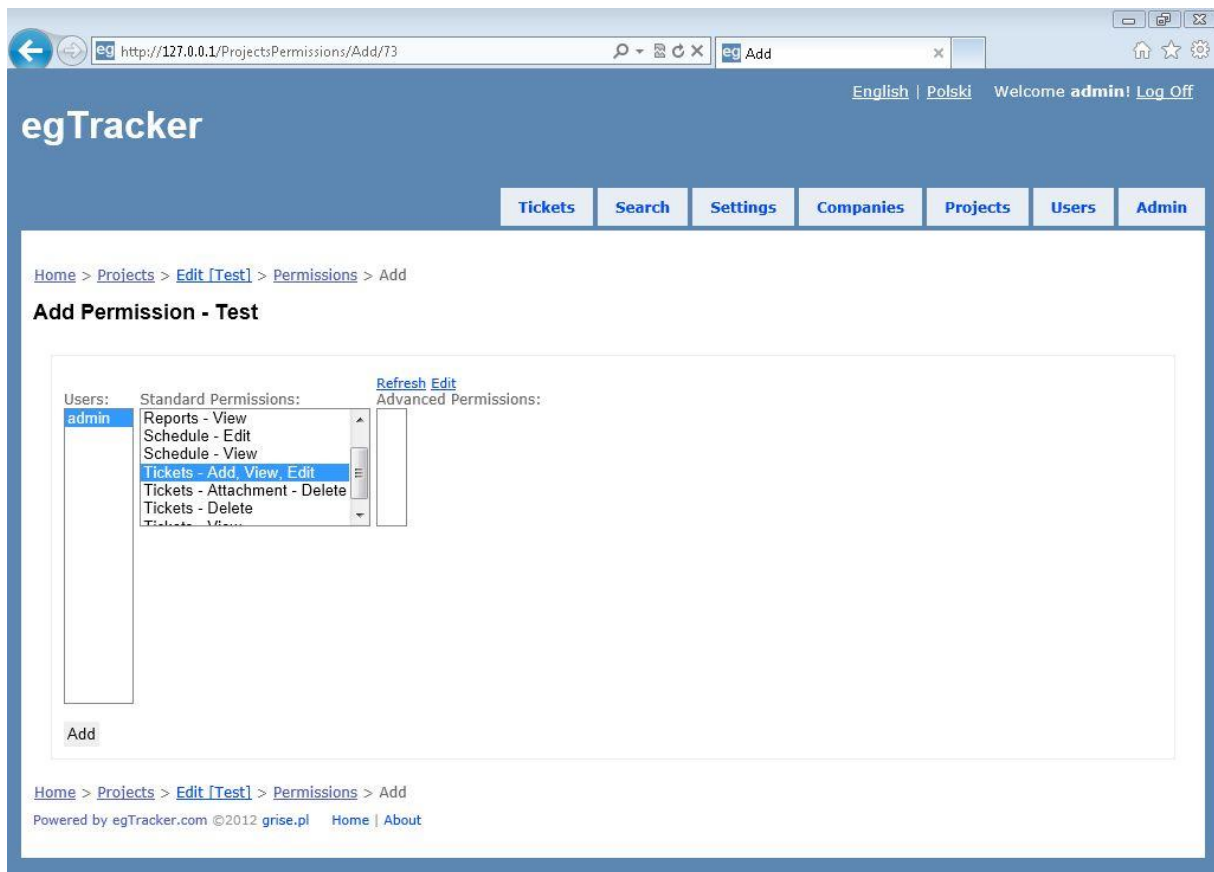
The screenshot shows a web browser window with the URL `http://127.0.0.1/Projects/Create`. The page title is "egTracker". The navigation bar includes links for "Tickets", "Search", "Settings", "Companies", "Projects", "Users", and "Admin". The user is logged in as "admin!". The main content area is titled "Create project" and contains a form with the following fields and options:

- Name:** Text input field containing "Test".
- Short Name:** Text input field.
- Email Notifications:** Checkmark ☒ and a dropdown menu set to "Details".
- Record Time:** Checkmark ☒.
- Attachments:** Checkmark ☒ and a dropdown menu set to "Upload via HTML".
- Custom Statuses:** Checkmark ☐.
- Library:** Checkmark ☐.
- Maps:** Checkmark ☐.
- Schedule:** Checkmark ☐.
- Ticket Types:** Checkmark ☐.
- Create:** Button.

## Grant permissions

Grant permissions:

- Projects
- Permissions
- Add new
- Tickets – Add, View, Edit



## Create new ticket

Create new ticket:

- Tickets
- Create new

