

Uploader Webby

Version 2.5b

User's Guide

February 2011

© Babu Software, All rights reserved.

This document is for use with the Uploader Webby. Reproduction, transfer, distribution or storage of part or all of the contents in this document in any form without the prior written permission of Babu Software is prohibited.

1.0 Introduction

This document describes the Uploader Webby.

2.0 Getting Started

This document describes the Uploader Webby :
Uploader Webby intended for fetch sms from netshell and upload to url.

2.1 Overview

Uploader Webby is Remote Client for Netshell it uses to fetch message from NetShell and upload message to remote web site.

2.2 Features

Multiple User Account

2.3 About the Package Components

Here is a brief description of the components contained in the packages listed above:

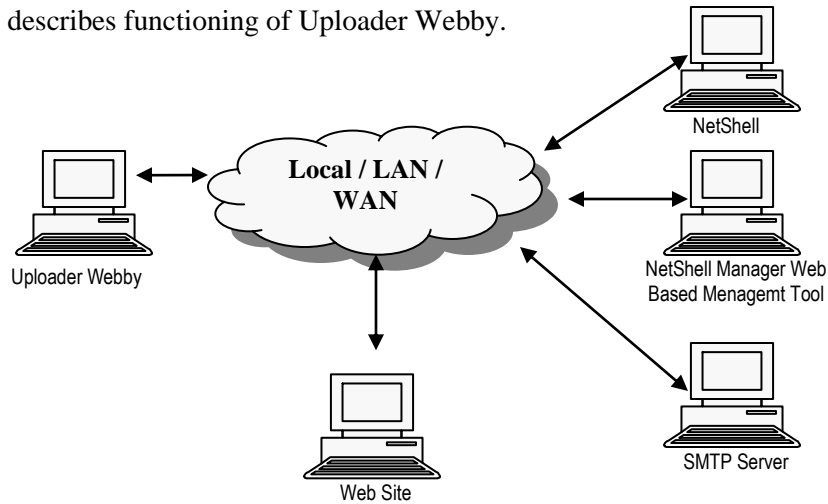
- Remote Client for NetShell

3.0 Software Requirements

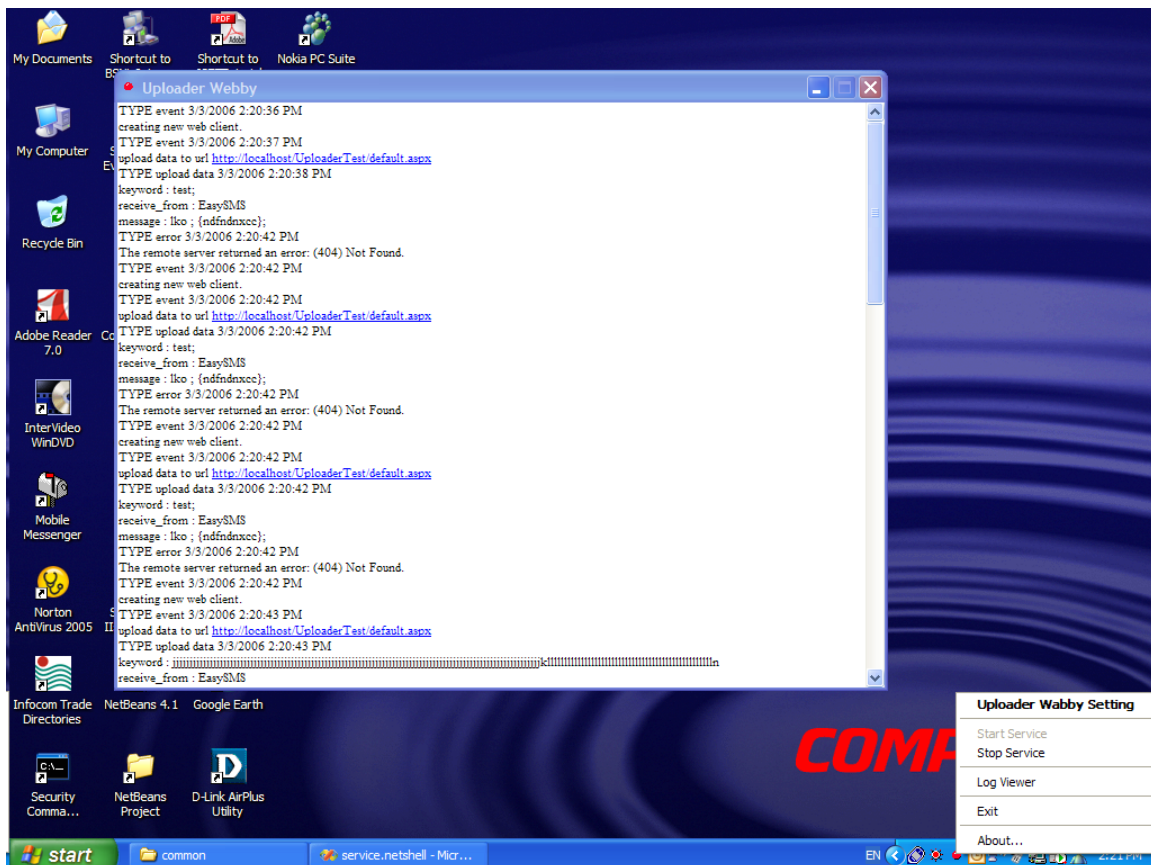
- Windows 2000 with Service Pack 2 or Windows 98/Me/2002/XP/2003/Vista/2008/Windows 7.
- Microsoft Framework 3.5 SP1, freely available from the Microsoft web site at www.microsoft.com Microsoft Framework 3.5 SP1 is highly recommended.
- Microsoft Internet Explore 6.0
- **Service Requirements** Netshell (Local / Remote)

4.0 How It Works

Diagram below describes functioning of Uploader Webby.



5.0 Uploader Webby Application and Connectivity



Screen 1: Uploader Webby

Function available in Uploader Webby : send start/ stop service log viewer.

6.0 FAQ

Q. Please provide default setting information?

A. default setting of Uploader Webby given blow

User/Password	system@netshell/manager (Find out your user account id /pass)
Uploader Webby default port	8020 TCP
Uploader Webby Configuration File	client.exe.config
Location of configuration file	C:\Program Files\Babu Software\Uploader Webby\

Q. Can Change of Uploader Webby port is possible?

A. yes change of port is possible.

Q. How to change Uploader Webby port?

A . Find out Netshell service host and port then Open Configuration file “client.exe.config” in notepad. For Example I found that my NetShell service is running 9920 port host localhost so change port is required from 8020 to 9920

Change value from

```
<client url="http://localhost:8020/RemotingSMS">  
<wellknown type="service.netshell.ServiceNeXT, service.netshell"  
url="http://localhost:8020/RemotingSMS/ServiceNeXT.soap" />  
</client>
```

to

```
<client url="http://localhost:9920/RemotingSMS">  
<wellknown type="service.netshell.ServiceNeXT, service.netshell"  
url="http://localhost:9920/RemotingSMS/ServiceNeXT.soap" />  
</client>
```

Q. Remote management of Uploader Webby is possible?

A. NO remote management is possible.

Q. Whenever I send command always got message *the underline connection was close: unable to connect remote server?*

A. this is due to service not available or invalid configuration. Find out correct configuration, service status from your NetShell Administrator.

7.0 For More Information

For more information about configuring and using the components in the packages, contact

Manoj Yadav

Babu Software

Phone Number: (+91) 9415917612

Or mail to support@bstpl.co.in

Website <http://www.bstpl.co.in>