



[www.anetac.com](http://www.anetac.com)

medi@expert<sup>TM</sup> series 005



## Working with medi@maze : part 1

In part 3 of working with medi@morph, we created a simple video title. This article will show you how to use medi@maze to create a video title with sound. Graphics will be combined using a paint application.

### ***Requirements***

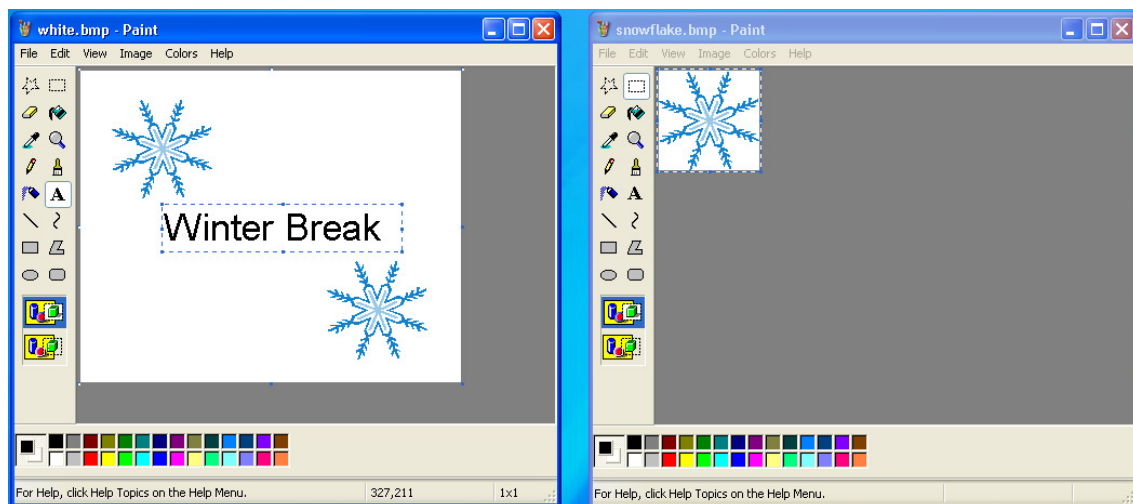
*medi@maze* – Media editing tool by Anetac Software.

*Microsoft Paint* – Paint application that ships with the Windows OS.

### ***Combining graphic files***

To do this, you will need to open two instances of Microsoft Paint (Paint is usually found under *Start | Programs | Accessories*). In one instance, load the file “white.bmp” and in the other load the file “snowflake.bmp”.

To place snowflakes on your white background, choose *Edit | Select All* followed by *Edit | Copy* in the Paint instance where the file “snowflake.bmp” loaded. Move over to your first instance of Paint (white.bmp) and choose *Edit | Paste*.

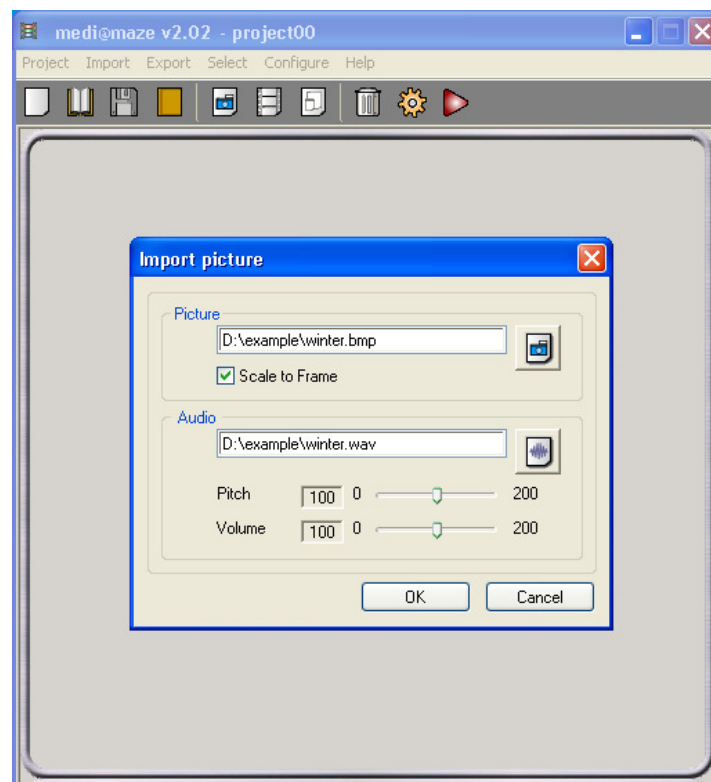


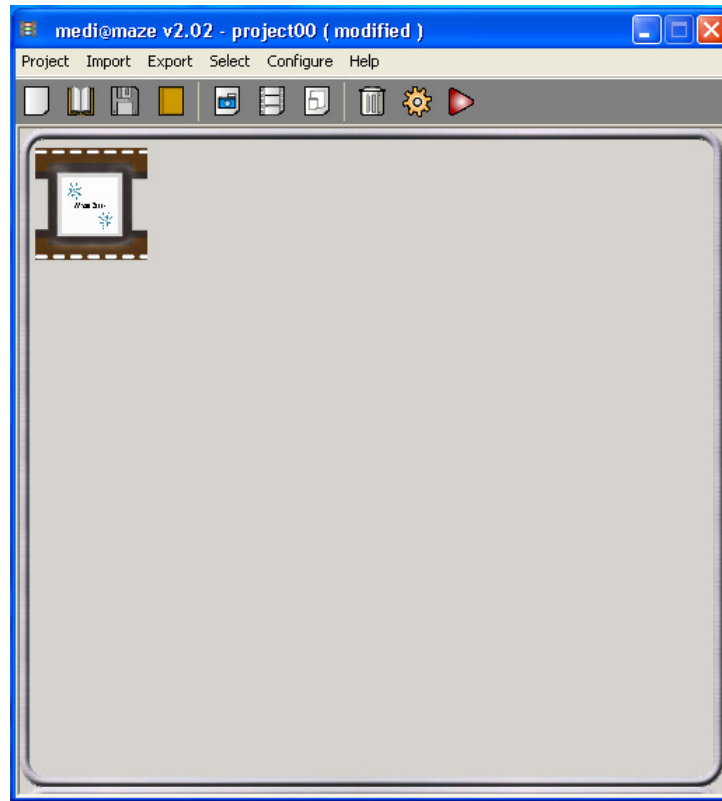
You can now type in your text with the type tool, or add more graphics to your title as required by copying and pasting between application instances.

From the first Paint instance, choose the *File / Save As...* pull down menu option. You can now name and save your new title graphic. We called ours “winter.bmp”.

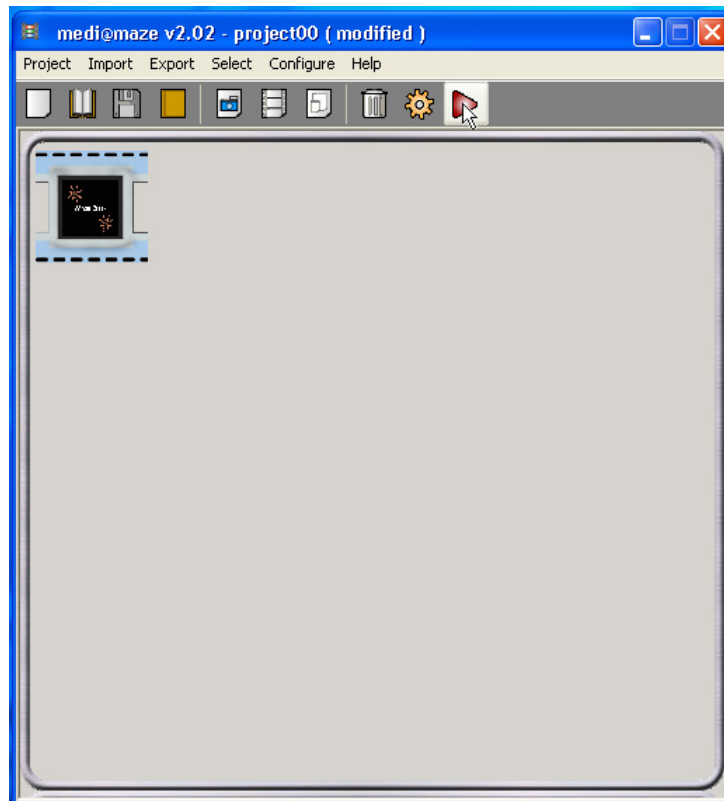
### ***Creating the title video***

You are now ready to use medi@maze to create a video title with sound. You can do this in one step using the picture import option. Start medi@maze, create a project, and import “winter.bmp” along with “winter.wav” to be used as the background audio.





The resulting media clip is your video title with sound. To play your media clip, select it (press the *shift* key as you click on it) and press the *play* button.



This is the end of working with medi@maze, part 1. Here we described the steps required to create a video title with sound. We hope this information has been useful. Next, we're going to create a simple presentation.

*Anetac Design Team* - Contact address: [feedback@anetac.com](mailto:feedback@anetac.com)