

“SysReturn” Installation Quick Guide

Preparation

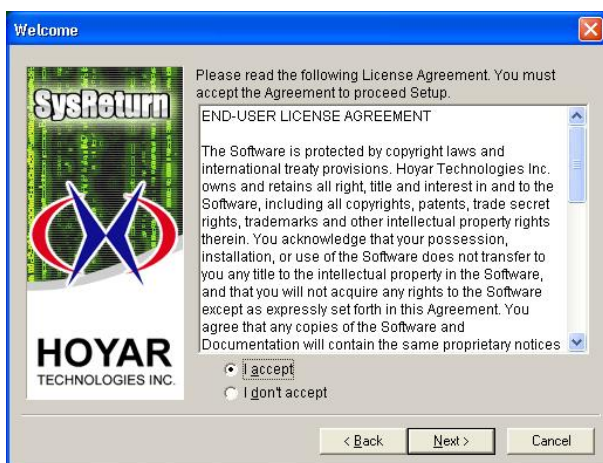
- Please ensure the normal operation of your computer and meet the minimum requirement before you install SysReturn.
- Please remove the similar products and delete its VxD driver before the installation.
- Please temporarily disable all anti-virus software.
- It is recommended to defrag your hard disk to optimize the system performance before you install SysReturn.
- Enter CMOS and make sure that the parameters of the first HD are correct.
- Enter CMOS and disable the Virus Warning at Feature Setup before you install SysReturn.

Proceed Installation

1. Insert the SysReturn CD in the CD-Rom, double click on setup.exe and the following prompt will appear:

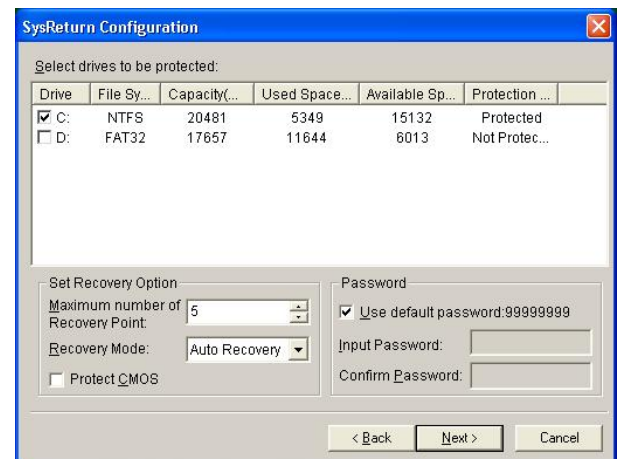


2. After all six inspections are made, check **All the recommended inspections above are confirmed** and click **Next** for the following prompt.



3. Click **I accept** then click **Next** for the following prompt:

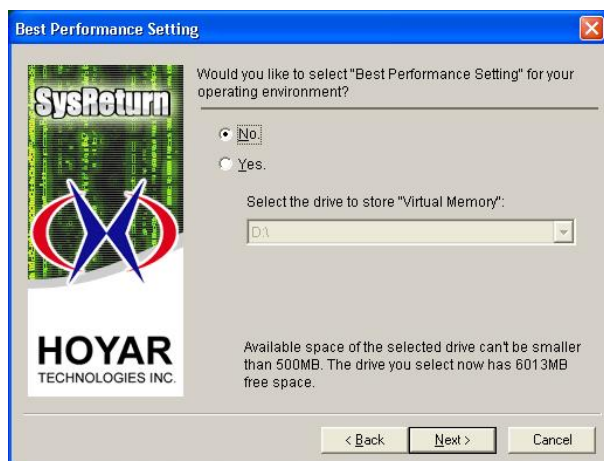
4. Input your **User Name**, **Organization Name**,. Then click **Next** for the following prompt:



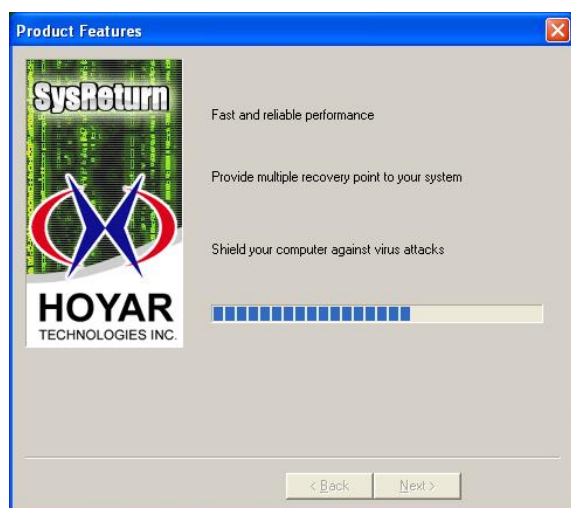
5. User can select any partition he/she desired to protect the information inside. By default, the system protects all partitions.

6. In **Maximum number of Recovery Point**, you can set the number of recovery points supported (up to **30**).
7. In **Recovery Mode**, select the action you wish to execute every time you boot up your system: Auto Reserve, Auto Recovery or Manual Recovery.
8. Select whether to **Protect CMOS** or not. If you tick the option, every time the CMOS setting changes, SysReturn will notified users whether to save these changes or ignores them.
9. Set **Password**. The default password is: **'99999999'**.

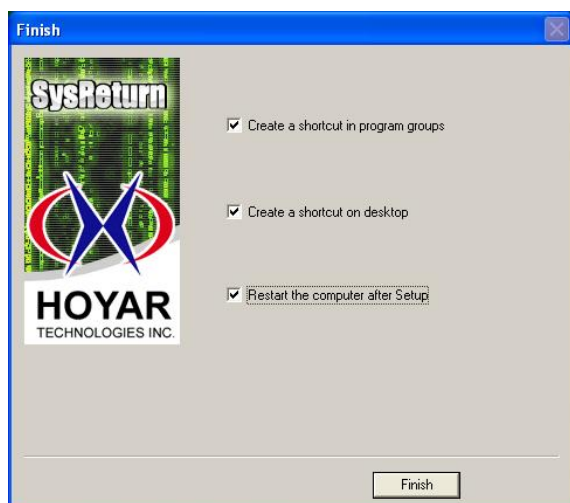
10. After configuration, click **Next** to continue.



11. If you don't feel like to use our "**Best Performance Setting**", please select **No**. If you do, select **Yes** and the location storing "**Virtual Memory**" will be moved to a drive that is not protected. Then click **Next** to continue.



12. When you finish setting SysReturn's Configuration, click **Next** for the following prompt:



13. Click **Finish** and restart your computer to complete the installation.